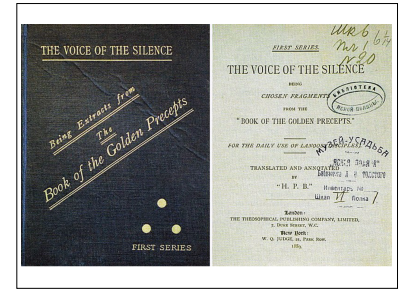
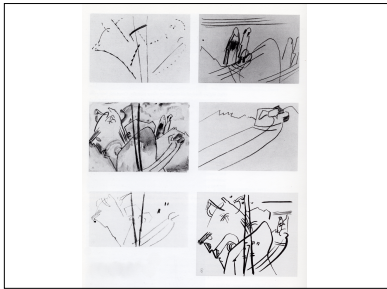
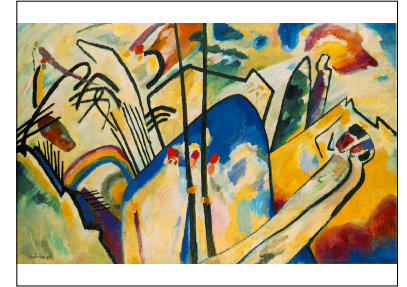


Close-Viewing
 Wassily Kandinsky
Battle Composition IV
 and
 Sonia Delaunay-Terk
Rhyme



THEOSOPHY
 AN INTRODUCTION TO THE SUPERSENSIBLE
 KNOWLEDGE OF THE WORLD AND THE
 DESTINATION OF MAN
 BY
RUDOLF STEINER
 TRANSLATED WITH THE PERMISSION
 OF THE AUTHOR
 FROM THE THIRD GERMAN EDITION
 BY
 E. D. S.
 RAND McNALLY & COMPANY, PUBLISHERS
 CHICAGO 1928 NEW YORK

**ABSTRACTION
 and
 EMPATHY**
 A Contribution to the Psychology of Style
 by
WILHELM WÖRRINGER
 Translated from the German by Michael Sauter
 With an Introduction by
HILTON KRAMER
 ELEPHANT PAPERBACKS
 Joan R. Ott, Publisher Chicago



The Collected Works of
 EDITH STEIN
 Volume Three
ON THE PROBLEM OF EMPATHY
 Third Revised Edition
 Translated by
 Waltraut Stein, Ph.D.
 Translated by Waltraut Stein, Ph.D.

