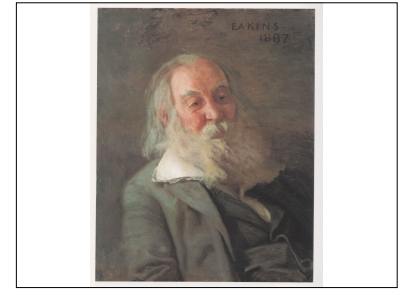
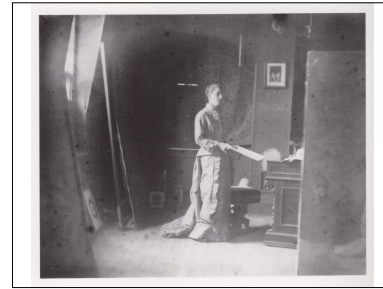


Close-viewing work by
Thomas Eakins
The Pathetic Song
and
Portrait of Walt Whitman



WHEN LILACS LAST IN THE
DOOR-YARD BLOOMED.

1

1. When lilacs last in the dooryard bloom'd,
And the great green early morn'g in the valley lay,
I, the one whose song the birds this spring
Have brought to you, and you have brought to me,
And the great green early morn'g in the valley lay,
I, the one whose song the birds this spring
Have brought to you, and you have brought to me,

2

2. In the great green early morn'g in the valley lay,
I, the one whose song the birds this spring
Have brought to you, and you have brought to me,
And the great green early morn'g in the valley lay,
I, the one whose song the birds this spring
Have brought to you, and you have brought to me,

Close-viewing
Alfred Bierstadt
The Rocky Mountains, Lander's Peak



